

# Henry2 DW1 LWD RT 500TVD

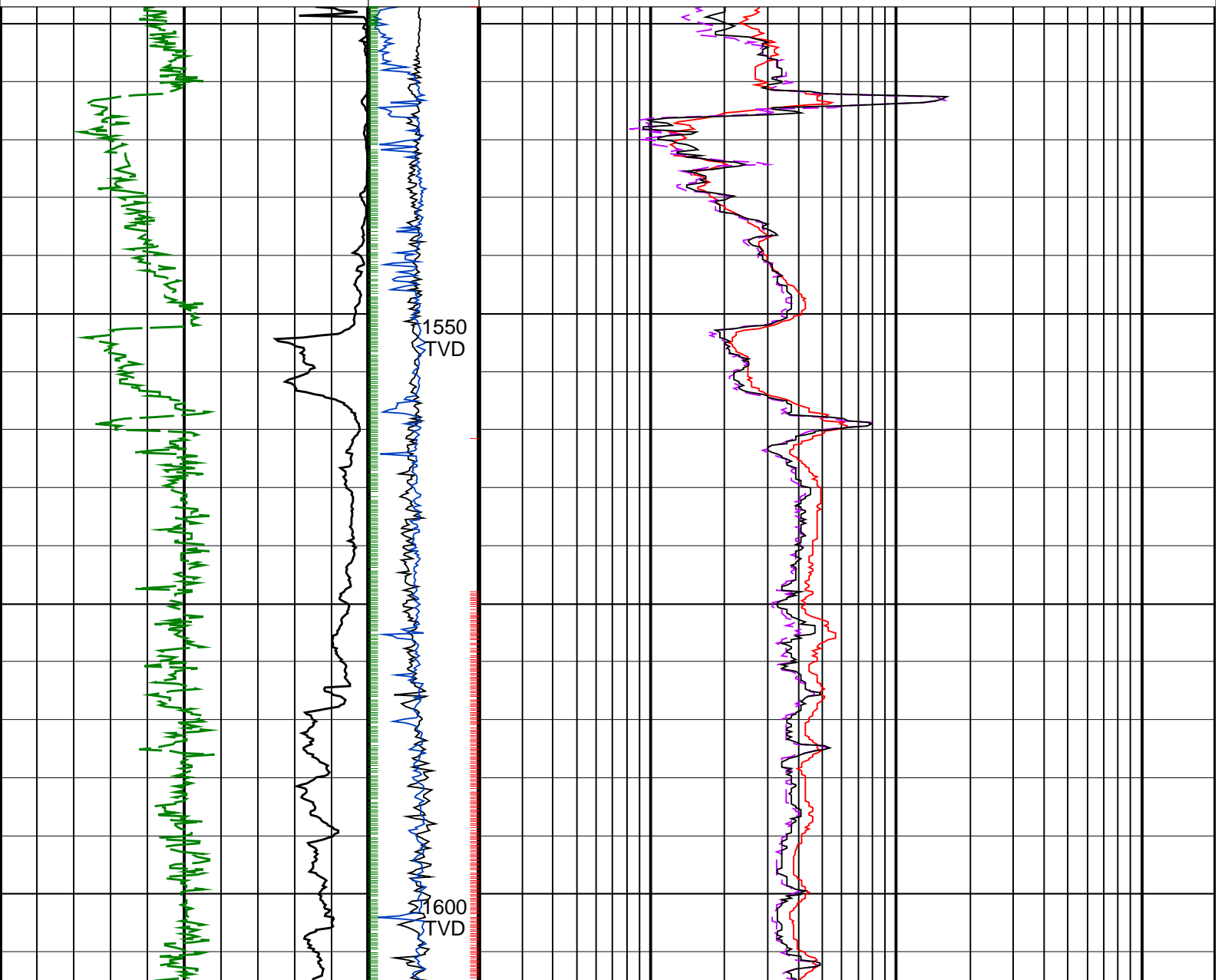
IDEAL Version: ID13\_OC\_11 <TVD> Vertical Scale: 1:500

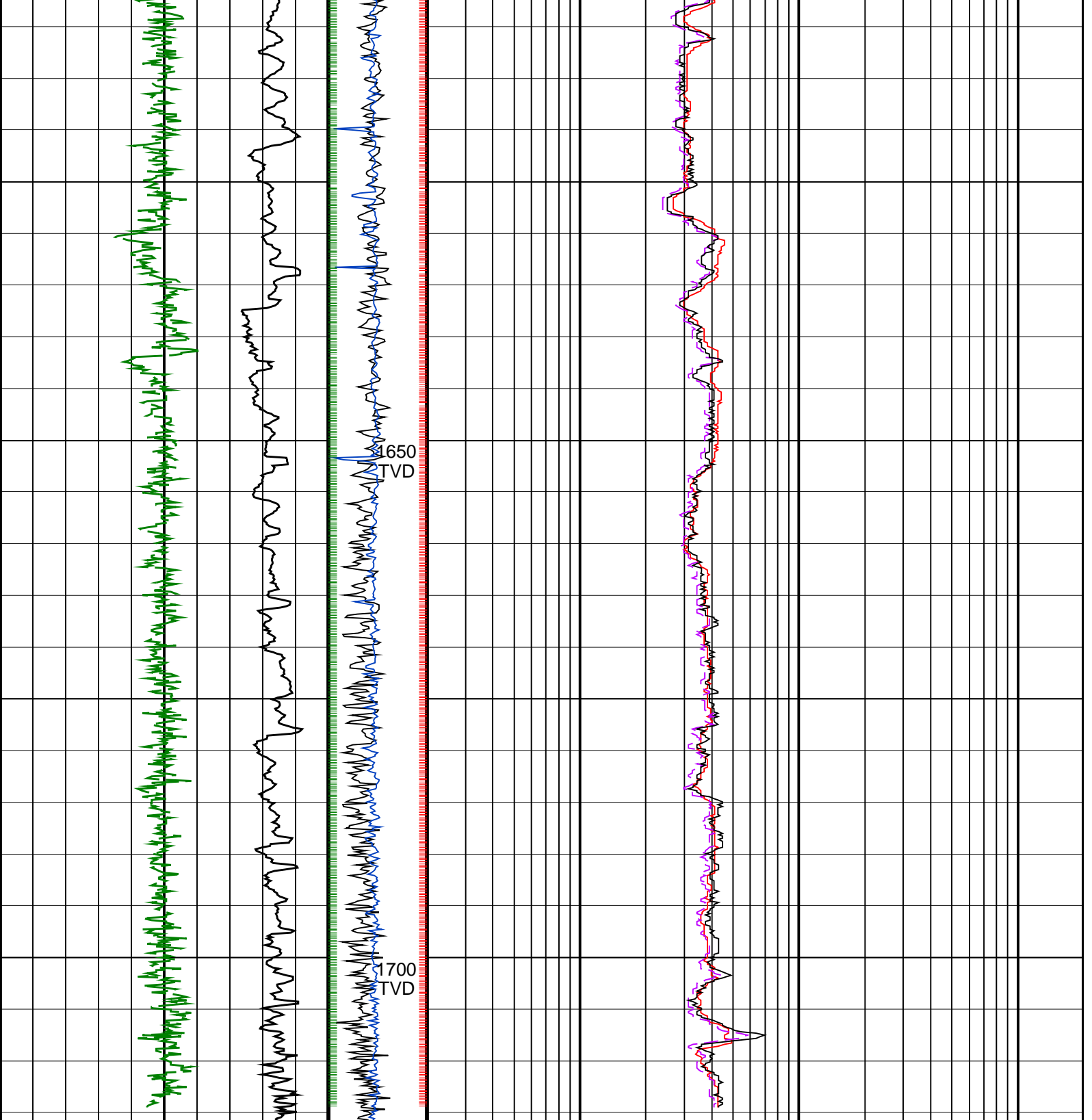
Graphics File Created: 18-Sep-2008 04:31

## PIP SUMMARY

- ┆ ARC Gamma Ray Samples
- ┆ ARC Resistivity Samples

		<b>ARC BHCorr Phase-Shift Resistivity 40-in. at 2 MHz, Real-Time (P40H_RT)</b>	
		0.2	200
		(OHMM)	
<b>ARC Gamma Ray, Real-Time (ARC_GR_RT)</b>	<b>MWD Collar RPM (CRPM_RT)</b>	<b>ARC BHCorr Phase-Shift Resistivity 28-in. at 2 MHz, Real-Time (P28H_RT)</b>	
0	0	0.2	200
(GAPI)	(RPM)	(OHMM)	
200	250		
<b>ROP*5 (ROP5)</b>	<b>PKPK_RPM (Stick RT)</b>	<b>ARC BHCorr Attenuation Resistivity 40-in. at 2 MHz, Real-Time (A40H_RT)</b>	
0	0	0.2	200
(M/HR)	(RPM)	(OHMM)	
200	500		





ROP*5 (ROP5) (M/HR)	PKPK_RPM (Stick_RT) (RPM)	ARC BHCORR Attenuation Resistivity 40-in. at 2 MHz, Real-Time (A40H_RT) (OHMM)
200	0	0.2
	500	200
ARC Gamma Ray, Real-Time (ARC_GR_RT) (GAPI)	MWD Collar RPM (CRPM_RT) (RPM)	ARC BHCORR Phase-Shift Resistivity 28-in. at 2 MHz, Real-Time (P28H_RT) (OHMM)
0	0	0.2
200	250	200
		ARC BHCORR Phase-Shift Resistivity 40-in. at 2 MHz, Real-Time (P40H_RT) (OHMM)
		0.2
		200

PIP SUMMARY

- ARC Gamma Ray Samples
- ARC Resistivity Samples

